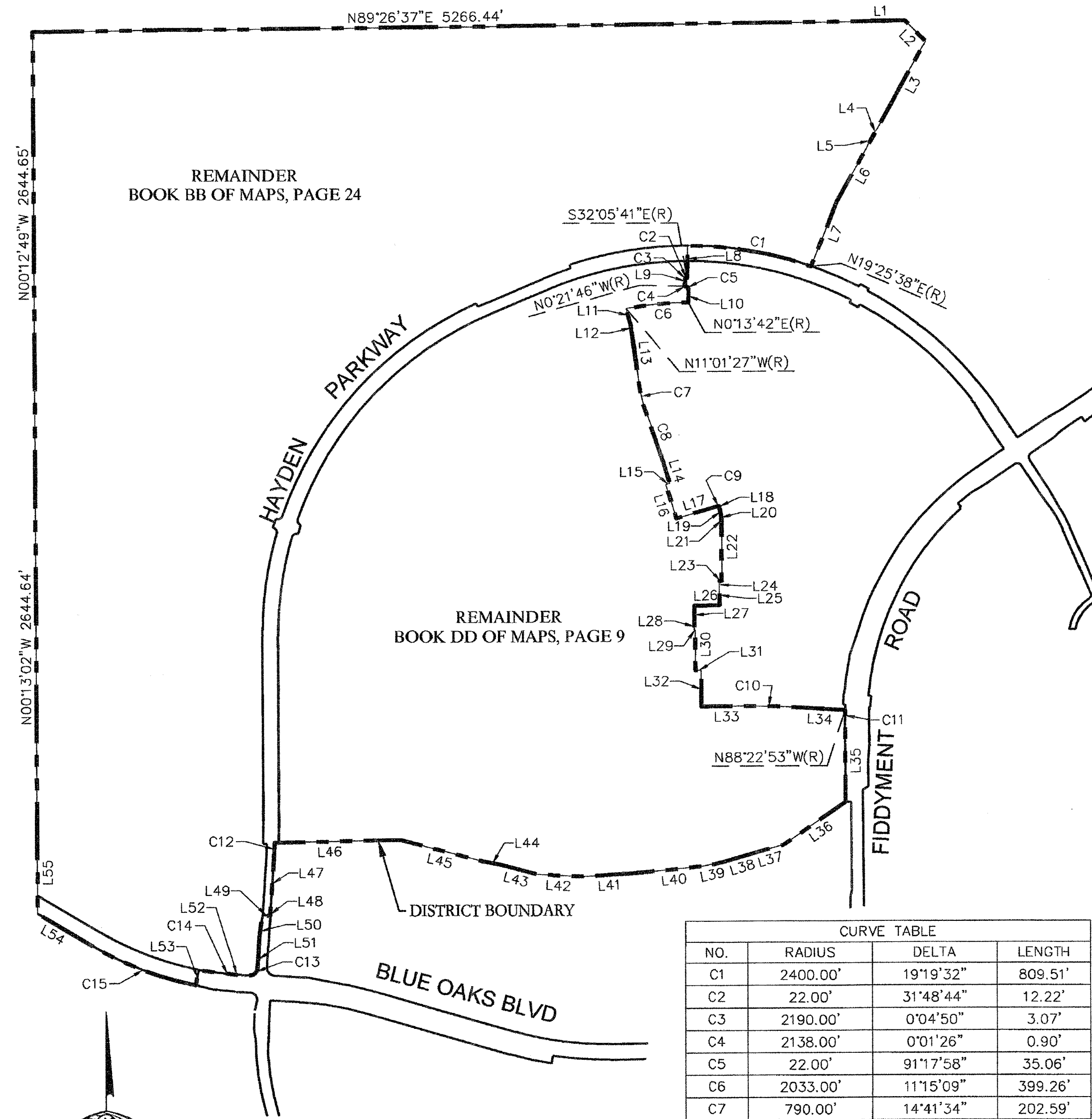
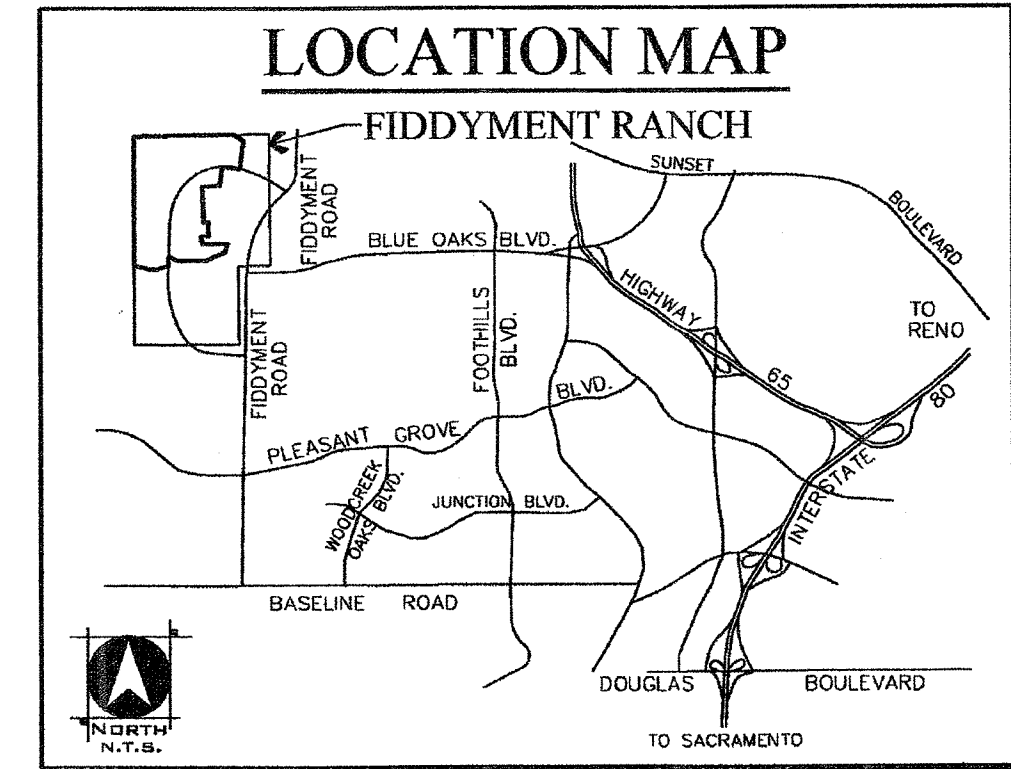


PROPOSED BOUNDARIES OF
FIDDYMENT RANCH COMMUNITY FACILITIES DISTRICT No. 5
 (PUBLIC FACILITIES)

CITY OF ROSEVILLE, COUNTY OF PLACER, STATE OF CALIFORNIA
 SECTIONS 13 AND 24, T. 11 N., R. 5 E. AND A PORTION OF SECTION 18, T. 11 N., R. 6 E., M.D.B.&M.



LINE TABLE		
No.	Bearing	Length
L1	N88°56'05"E	336.22'
L2	N44°35'12"W	188.64'
L3	N29°04'16"E	642.86'
L4	N37°08'16"E	52.97'
L5	N24°01'12"E	84.43'
L6	N29°04'16"E	401.30'
L7	N21°30'48"E	448.04'
L8	N0°57'40"E	206.69'
L9	N0°21'46"W	52.00'
L10	N0°57'40"E	82.62'
L11	N14°43'07"W	105.23'
L12	N10°49'21"W	52.00'
L13	N7°21'01"W	346.96'
L14	N16°27'17"W	180.29'
L15	N73°32'43"E	25.00'
L16	N16°27'17"W	230.50'
L17	N73°32'43"E	275.10'
L18	N15°54'23"W	12.50'
L19	N9°14'37"W	58.72'
L20	N4°48'14"W	15.23'
L21	N1°55'09"W	21.92'
L22	N0°13'02"W	378.54'
L23	N89°46'58"E	14.80'
L24	N0°00'00"E	52.00'
L25	N0°13'02"W	105.00'
L26	N89°46'58"E	165.00'
L27	N0°13'02"W	105.00'
L28	N0°06'31"W	52.00'
L29	N89°46'58"E	6.31'
L30	N0°13'02"W	262.00'
L31	N89°46'58"E	36.74'
L32	N0°13'02"W	233.00'
L33	N89°46'58"E	305.22'
L34	N86°22'38"W	287.06'
L35	N0°26'58"W	518.24'
L36	N55°00'35"E	486.06'
L37	N74°28'30"E	183.80'
L38	N73°54'28"E	208.17'
L39	N78°27'30"E	151.07'
L40	N84°17'15"E	427.71'
L41	N86°22'37"E	333.50'
L42	N86°50'50"W	303.29'
L43	N74°51'00"W	237.11'
L44	N79°30'56"W	111.33'
L45	N75°15'02"W	554.80'
L46	N88°47'27"E	806.41'
L53	N10°51'52"E	100.00'
L54	N59°08'55"W	406.43'
L55	N0°16'24"W	406.18'

CURVE TABLE			
NO.	RADIUS	DELTA	LENGTH
C1	2400.00'	19°19'32"	809.51'
C2	22.00'	31°48'44"	12.22'
C3	2190.00'	0°04'50"	3.07'
C4	2138.00'	0°01'26"	0.90'
C5	22.00'	91°17'58"	35.06'
C6	2033.00'	11°15'09"	399.26'
C7	790.00'	14°41'34"	202.59'
C8	2900.00'	5°35'18"	282.85'
C9	1321.00'	0°32'54"	12.64'
C10	4931.00'	3°50'24"	330.47'
C11	1973.00'	2°04'05"	71.22'
C12	3025.00'	1°51'15"	97.90'
C13	50.00'	90°00'00"	78.54'
C14	1950.00'	7°00'47"	238.68'
C15	2050.00'	19°59'13"	715.12'

CITY CLERK'S STATEMENT

FILED IN THE OFFICE OF THE CLERK OF THE CITY OF ROSEVILLE, CALIFORNIA ON THIS 21 DAY OF January, 2016.

Sonia Orozco
 SONIA OROZCO, CITY CLERK
 CITY OF ROSEVILLE,
 PLACER COUNTY, CALIFORNIA

I HEREBY CERTIFY THAT THE WITHIN MAP SHOWING PROPOSED BOUNDARIES OF FIDDYMENT RANCH COMMUNITY FACILITIES DISTRICT NO. 5 (PUBLIC FACILITIES), CITY OF ROSEVILLE, COUNTY OF PLACER, STATE OF CALIFORNIA, WAS APPROVED BY THE CITY COUNCIL OF THE CITY OF ROSEVILLE, AT A REGULAR MEETING THEREOF, HELD ON THE 21 DAY OF January, 2016, BY ITS RESOLUTION NUMBER 16-09.

Sonia Orozco
 SONIA OROZCO, CITY CLERK
 CITY OF ROSEVILLE,
 PLACER COUNTY, CALIFORNIA

RECORDER'S STATEMENT

FILED THIS 1st DAY OF February, 2016, AT THE HOUR OF 14:42 O'CLOCK P.M., IN BOOK 3 OF ASSESSMENT AND COMMUNITY FACILITIES DISTRICTS AT PAGE 73 IN THE OFFICE OF THE COUNTY RECORDER OF THE COUNTY OF PLACER, STATE OF CALIFORNIA.

Document No: 2016-0007232
 Fee: \$8.00

Jim McCauley
 COUNTY RECORDER, COUNTY OF PLACER
d. melnick, Deputy

WOOD RODGERS
 DEVELOPING INNOVATIVE DESIGN SOLUTIONS
 3301 C St, Bldg. 100-B Tel 916.341.7760
 Sacramento, CA 95816 Fax 916.341.7767

JANUARY 2016

Sheet 1 of 1

1027.147

0 300 600 1200
 SCALE: 1" = 600'